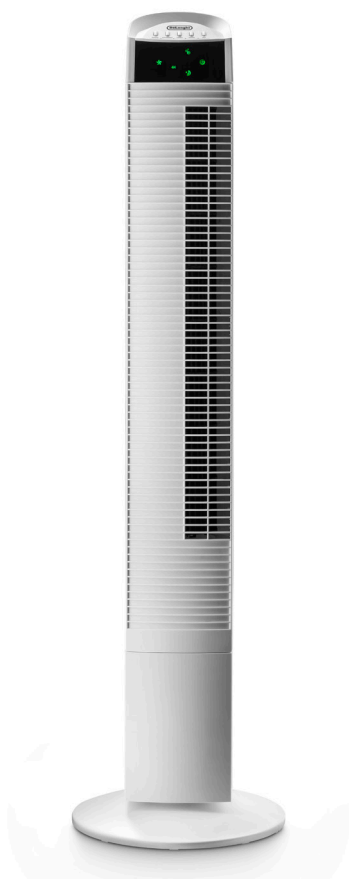
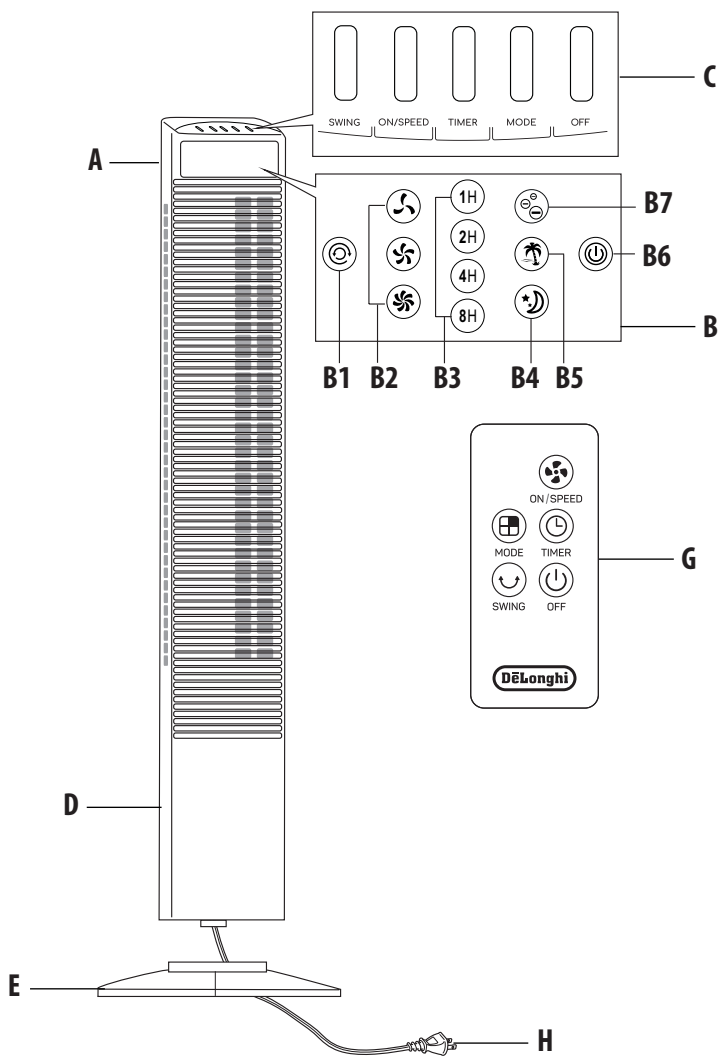

DETF110 - DETF111

OSCILLATION TOWER FAN

Instructions for use



DeLonghi



IMPORTANT SAFEGUARDS

Safety warnings

- Read these instructions carefully and retain for future reference.
- Remove all packaging and any labels.
- The appliance is not intended for use by persons (including children) with reduced physical, sensory or mental capabilities, or lack of experience and knowledge, unless they have been given supervised or instruction concerning use of the appliance in a safe way and understand the hazards involve by a responsible person for their safety.
- Young children should be supervised to ensure that they do not play with the appliance.
- If the supply cord is damaged, it must be replaced by the manufacturer or its service agent or a similarly qualified person in order to avoid a hazard.
- Ensure that the fan is switched off from the supply mains for cleaning.
- Misuse of your appliance can result in injury.

FOR EUROPEAN MARKET ONLY

- This appliance can be used by children aged from 8 years and above and persons with reduced physical, sensory or mental capabilities or lack of experience and knowledge if they have been given supervision or instruction concerning use of the appliance in a safe way and understand the hazards involved. Children shall not play with the appliance. Cleaning and user maintenance shall not be made by children without supervision.
- For indoor use only. Rain and water are dangerous in the presence of electricity.
- Use on stable horizontal surfaces only to avoid fan tipping over.

Before Plugging In

- Make sure your electricity supply is the same as the one shown on the rating label.
- Please ensure the socket's power is over 10Amps / 240V and the voltage should meet the requirements on the rating label.
- Do not operate or plug in the fan with wet hands.
- Ensure the plug is plugged in the socket completely.
- If the fan does not rotate or with abnormal smell, immediately unplug the fan and contact service center for repair.
- Do not place heavy objects on the power cord, it will damage the cord.
- If the plug or the power cord is damaged, it will result in short circuit and may lead to electric shock or fire. Please unplug the fan and call service center for repair. These parts must be replaced by the manufacturer or its service agent or a similarly qualified person in order to avoid a hazard.
- Do not use pesticides and flammable sprays around the product, it may cause product damage.
- Do not put any foreign object in the fan.
- Do not spill liquid on the fan, it will lead to short circuit and damage the fan.
- Do not use the fan around a tub, sprinkler or pool, it will lead to short circuit and damage the fan.
- Do not use the appliance near showers, bathtubs, sinks etc
- Do not leave the fan unattended. Please turn the fan off when you go out.
- Do not pull the power cord to unplug the fan, it will damage the cord.

Service and Customer Care

- If the cord is damaged it must, for safety reasons, be replaced by DeLonghi or an authorized DeLonghi repairer.
- If you experience any problems with the operation of your appliance, before requesting assistance, please visit www.delonghi.com
- Please note that your product is covered by a warranty, which complies with all legal provisions concerning any existing warranty and consumer rights in the country where the product was purchased.
- If your DeLonghi product malfunctions or you find any defects, please send it or bring it to an authorized DeLonghi service centre. To find up to date details of your nearest authorized DeLonghi service center visit www.delonghi.com

Features

- Wide oscillation angle for your comfort
- Dual oscillation directions
- 3 wind modes: apart from normal wind mode, two additional wind modes for selection: natural, sleep

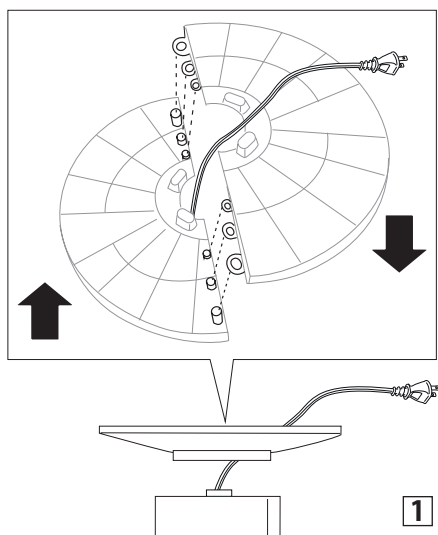
- 3 fan speeds: low, mid, high
- 4 timer settings: 1, 2, 4 and 8 hours
- LED display with infrared remote control
- Auto dimming function

DESCRIPTION

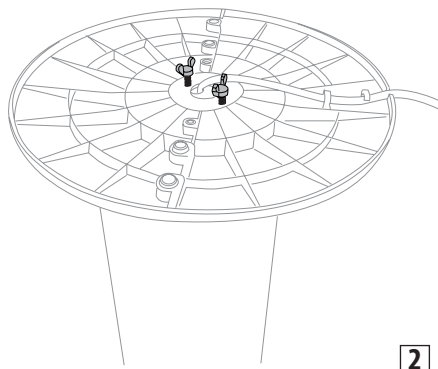
- A** Handle
- B** Control panel
 - B1** Swing symbol
 - B2** Low/ Med/ High speed symbol
 - B3** Hour symbol
 - B4** Sleep symbol
 - B5** Natural symbol
 - B6** ON/SPEED symbol
 - B7** ION symbol (always active as the function is included in every operating mode)
- C** Button control panel
- D** Tower
- E** Base
- F** Power cable
- G** Remote control
- H** Plug

Installation

- Take out the fan for assembly and make sure all accessories are included.
- Please assemble the fan as below instructions:
 - 1 Unscrew the wing nuts locked in the rear part of the tower and assemble the base together according to figure 1. Before assembling the base, remember to let the power cord pass through the hole.



- 2 Position the tower into the assembled base along the locating pole, according to figure 2 and fix it by means of supplied wing nuts.



- 3 After the assembly, put the machine in a suitable place, plug in and operate according to the instruction below.

USE

Operation Instruction

Note: When plugging in the first time you will hear 2 beeping sounds. This means the fan is correctly connected. When the unit is on standby status, only the ON/SPEED will be available. (Two beeps when unit is plugged in, one beep when buttons are pressed and one beep for power off).

1 ON/SPEED button

Start the fan operation by pressing the "ON/SPEED" button on the control panel. Press the "ON/SPEED" again to adjust the fan speed: Low → Med → High → Low..., led lights will turn on accordingly. To turn off the fan, press the "OFF" button, the appliance will turn off with one beep sound.

2 TIMER

Press TIMER button to set the time settings to the switch off: 1H → 2H → 4H → 8H → no timer → 1H.... LED lights will switch on accordingly. The fan will be under count down status until it turns off.

3 MODE

Press MODE button to select:

- Natural mode
- Sleep mode

Once the function is selected the display will show the relevant symbol.

Working rule of wind modes:

1 **Normal (only the ion symbol is on and these are the available fan speeds)**

LOW speed
MED speed
HIGH speed

2 **Natural**

The appliance will continuously cycle among HIGH, MED, LOW speed.

3 **Sleeping**

Similar to the natural mode but with a reduced frequency of the high speed.

4 **Auto dimming function**

The LED lights will automatically reduce without operation more than 1 minute.

REPLACING THE REMOTE CONTROL BATTERY

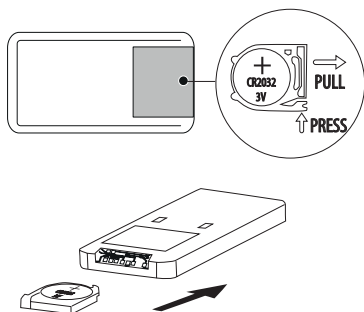
- Extract the battery holder on the back of the remote control (see figure below).
- Insert a battery type 3V CR2025 into the holder, making sure the polarity is correct (+ and -), then reinsert the holder into the back of the remote.

The remote control is ready for use.



Please note: If the remote control is disposed of or replaced, the battery must be removed and disposed of in accordance with local recycling regulations as batteries are harmful to the environment.

Do not throw the battery into an open flame as it may explode or release hazardous liquids.



WARNING: CHEMICAL BURN HAZARD.

KEEP BATTERIES AWAY FROM CHILDREN

This product contains a lithium button/coin cell battery. If a new or used lithium button/coin cell battery is swallowed or enters the body, it can cause severe internal burns and can lead to

death in as little as 2 hours. Always completely secure the battery compartment. If the battery compartment does not close securely, stop using the product, remove the batteries, and keep it away from children. If you think batteries might have been swallowed or placed inside any part of the body, seek immediate medical attention. The cells shall be disposed of properly, including keeping them away from children. Even used cells may cause injury.



CLEANING & MAINTENANCE

If there is too much dust or dirt on the front grid cover and wind wheel of the fan, the performance of the appliance would be affected, so we suggest to clean the fan once per month at least.

- Always remember to unplug the fan before cleaning, or it may cause electric shock or product damage.
- Clean with ordinary cleaner and banister brush. Do not use any chemical agents.

Unit surface cleaning

- Do not allow water and steam to drip on.
- Do not use corrosive detergent or solvent cleaning.
- Always unplug the fan before cleaning.

Maintenance guide

- Unplug and pack it to prevent dust from entering the body if not use for a long time.
- Place in a dry well ventilated place after packing it.

Proudly distributed by
De'Longhi Australia Pty Limited
P.O. BOX 4540
CASULA MALL NSW 2170
Customer Service Ph: 1800 126 659
Fax: 1800 706932
www.delonghi.com.au
e-mail: info.au@delonghigroup.com

De'Longhi New Zealand Limited
99 Khyber Pass Road
Grafton 1023
Auckland, New Zealand
P.O. Box 58-056 Botany
MANUKAU 2163
Customer Service Ph: 0508 200 300
Fax: 0508 200 301
www.delonghi.co.nz
e-mail: info.nz@delonghigroup.com

Register Now 
www.delonghi.com/register